

# ***Film Scanner***

---

**Macintosh  
Software Manual  
Version 4.0 E**

**UY-S90  
UY-S77**

# Table of Contents

## **Getting Started**

<b>Confirming the Operating Environment .....</b>	<b>4</b>
<b>Installing the TWAIN Driver and Scan Utility .....</b>	<b>5</b>
<b>Scanning Procedure .....</b>	<b>6</b>

## **Scanning**

<b>Starting the Supplied Scan Utility Software .....</b>	<b>7</b>
Starting the Scan Utility .....	8
Running Film Scanner from an Image Processing Application .....	9
<b>Setting the Preview and Scanning Conditions for All Frames (Preference Window) .....</b>	<b>10</b>
Opening Preference Window .....	10
Functions of command buttons on Preference Window .....	11
Setting on Feeder Window .....	12
Setting on Film Window .....	14
Setting on Scan Window .....	16
Setting on Image Window .....	19
Setting on Offset Window .....	21
Setting on Customize Window .....	23
Setting on Others Window .....	24
<b>Previewing Images .....</b>	<b>26</b>
Meanings of settings on Preview Window .....	28
<b>Selecting Images to be Scanned .....</b>	<b>29</b>

<b>Adjusting Preview Images .....</b>	<b>31</b>
Rotating all frames simultaneously .....	33
Adjusting vertical position .....	34
Adjusting horizontal position .....	35
Rotating by 90° .....	36
Mirroring .....	37
Cropping .....	38
Refreshing color and density .....	39
Adjusting density (Dark - Light) .....	40
Adjusting colors (Cyan - Red, Magenta - Green, Yellow - Blue) (for color film) .....	41
Adjusting contrast (Low - High) (for monochrome film) .....	42
Selecting correction level (for color negatives) .....	43
Adjusting gray balance (for color film) .....	44
Resetting to original image .....	45
 <b>Scanning Images .....</b>	 <b>46</b>
Scanning after previewing .....	46
Scanning without previewing .....	47
Specifying the saving method for the scanned images .....	49
 <b>Quitting Scan Utility .....</b>	 <b>55</b>

## **Others**

<b>Message List .....</b>	<b>56</b>
---------------------------	-----------

Depending on your system, certain illustrations in this manual, when printed out, may differ from the illustrations as portrayed on your screen.

The software windows shown in this manual are subject to change without notice.

# Confirming the Operating Environment

The Film Scanner utility software requires the following operating environment.

- Desktop Macintosh with Power PC processor mounted
- MAC OS 8 or later
- 64 MB or more of real memory
- SCSI interface to support the SCSI manager 4.3

**Note**

This software cannot work correctly with PowerBook series Macintosh.

Macintosh and PowerBook are registered trademarks of Apple Computer, Inc.

# Installing the TWAIN Driver and Scan Utility

To operate the Film Scanner, you need to install the TWAIN driver and the Scan Utility software on the computer.

Double click “Sony FilmScanner TWAIN install.”

The installer will run. Follow the instructions on your screen.

---

## When the installation is complete

The following files will have been created.

- In the System Folder/Preferences/TWAIN folder:  
(TWAIN folder will be created, if it does not exist.)  
**Sony FilmScanner:** Twain driver for the UY-S90/S77 Film Scanner  
**Source Manager:** Source Manager of the TWAIN driver  
**“UY-S77 LUT” folder:**  
**linearlut.lut:** Linear color table
- In the System Folder/Extensions folder:  
**UYS77Lib.PPC:** DLL for the UY-S90/S77 Film Scanner Twain driver  
**UYS77SCSILib.PPC:** DLL for the UY-S90/S77 Film Scanner Twain driver
- On desktop:  
**“Sony FilmScanner” folder:**  
**Sony FilmScanner Utility:** Utility software of the UY-S90/S77 Film Scanner (Scan Utility)  
**ReadMe:** Be sure to read it before operating the UY-S90/S77 Film Scanner  
**“Document” folder:**  
**UY-S90.pdf:** Operating Instructions for the UY-S90 Film Scanner  
**UY-S77.pdf:** Operating Instructions for the UY-S77 Film Scanner  
**Driver.pdf:** Software Manual for the UY-S90/S77 Film Scanner (this manual)

# Scanning Procedure

Click to jump to the topic you want to read the explanation.

- 1** Start the supplied Scan Utility software. *(page 7)*
  - Running Film Scanner from an image processing application *(page 9)*
- 2** Set the preview and scanning conditions for all frames. (Preference Window) *(page 10)*
  - Setting on Feeder Window *(page 12)*
  - Setting on Film Window *(page 14)*
  - Setting on Scan Window *(page 16)*
  - Setting on Image Window *(page 19)*
  - Setting on Offset Window *(page 21)*
  - Setting on Customize Window *(page 23)*
  - Setting on Others Window *(page 24)*
- 3** Preview images. *(page 26)*
- 4** Select images to be scanned. *(page 29)*
- 5** Adjust preview images. *(page 31)*
- 6** Scan images. *(page 46)*
  - Scanning after previewing *(page 46)*
  - Scanning without previewing *(page 47)*
  - Specifying the file saving method for the scanned images *(page 49)*
- 7** Quit Scan Utility. *(page 55)*

## Starting the Supplied Scan Utility Software

There are two ways to run the Film Scanner:

—Using Scan Utility software supplied with the Film Scanner.

—Using a commercially available image processing application allowing TWAIN.

- [To start the Scan Utility, click here. \(page 8\)](#)
- [To run the Film Scanner from an Image Processing Application, click here. \(page 9\)](#)

---

### Getting started

Mount a carrier on the Film Scanner.

(For mounting the carrier, refer to the Operating Instructions supplied with the Film Scanner.)

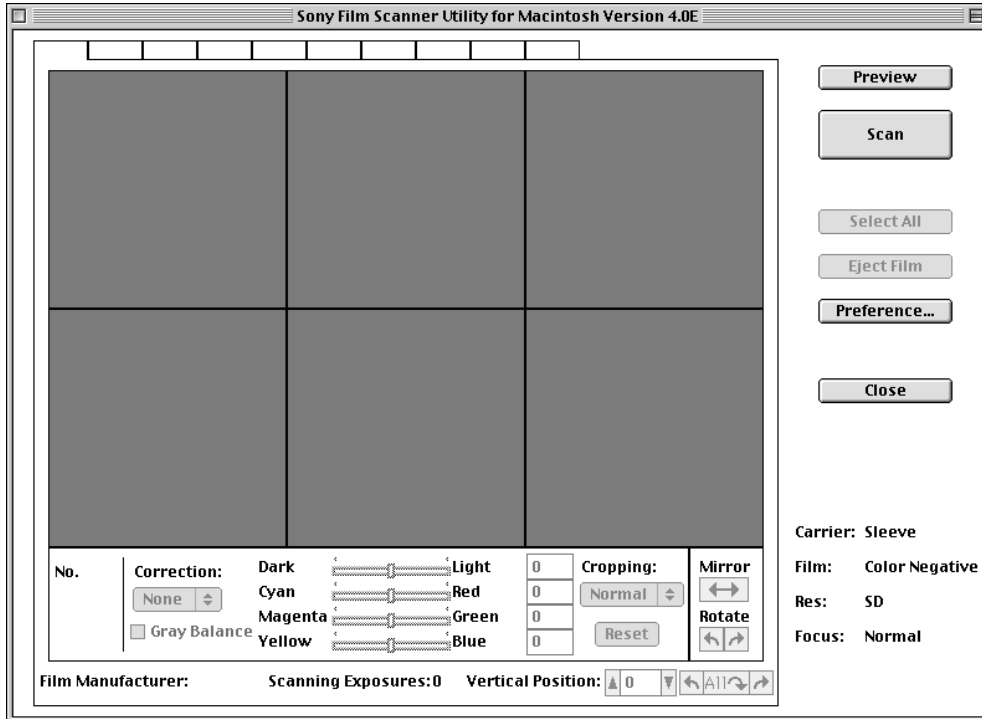
## Starting the Scan Utility

With Scan Utility, you can save the scanned images with specified file names.

Click Sony FilmScanner Utility in the root folder of the start up volume.

The following window appears.

The unit stands by for previewing or scanning.



### To close the window without previewing or scanning

Click Close.

#### [Related topics]

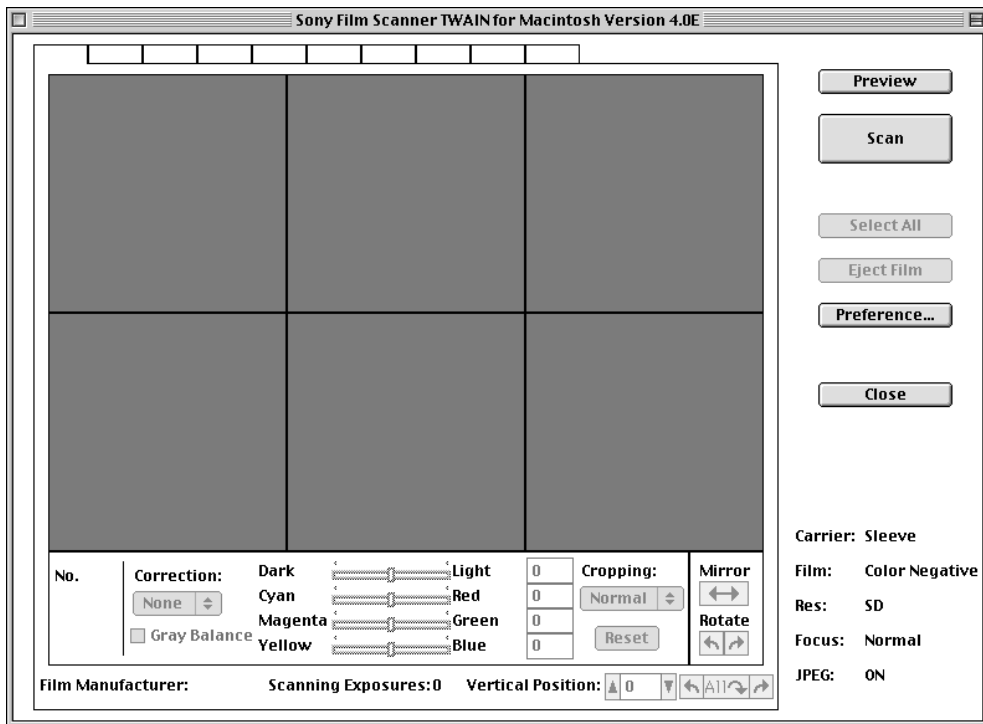
- To proceed to previewing ([page 26](#))
- To set the preview conditions ([page 10](#))
- To scan without previewing ([page 47](#))



## Running Film Scanner from an Image Processing Application

If you start running the Film Scanner from a commercially available image processing application allowing TWAIN sources, the scanned images will automatically be displayed on the screen. This is convenient for processing the scanned images with the application soon after scanning.

- 1 Start the image processing application.
- 2 Select “Sony FilmScanner” for TWAIN Source.
- 3 Import “Sony FilmScanner.”  
The TWAIN driver runs, then the unit stands by for previewing or scanning.



### To close the window without previewing or scanning

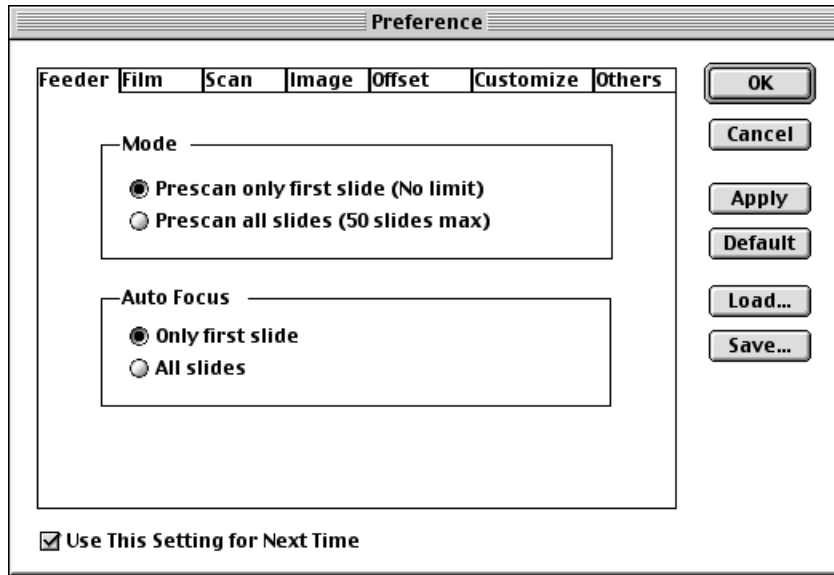
Click Close.

### [Related topics]

- To proceed to previewing ([page 26](#))
- To set the preview conditions ([page 10](#))
- To scan without previewing ([page 47](#))

# Setting the Preview and Scanning Conditions for All Frames (Preference Window)

Preference Window



## Opening Preference Window

Click Preference... on the right of the Preview Window, and the Preference Window appears.

There are seven Preference Windows: Feeder, Film, Scan, Image, Offset, Customize and Others.

To display the window you require, click the tab on the top.

On the Preference Window, you can set uniform preview and scan conditions to all frames. By changing a setting on the Preference Window and clicking OK or Apply, the preview images on the screen will reflect that change at the same time. The settings of the adjustment items on the Preview Window will also change.

### Note

The Feeder Window appears only when the UYA-S90SF Auto Slide Feeder is connected to the Film Scanner.

## Functions of command buttons on Preference Window

<b>OK</b>	Confirms the changed settings and closes the Preference Window.
<b>Cancel</b>	Ignores the changed settings and closes the Preference Window.
<b>Apply</b>	Confirms the changed settings with the Preference Window open and applies the settings to the preview images if present.
<b>Default</b>	Resets the Preference Window options to the default settings adjusted at the factory.
<b>Load...</b>	Calls out the settings previously saved in a file. By clicking Load..., the Open Window appears. Follow the instructions on your screen.
<b>Save...</b>	Saves the settings by specifying a file name. By clicking Save..., the Save Preference Window appears. Follow the instructions on your screen.
<b>Use This Setting for Next Time</b>	Click and show check mark so that the current settings are stored in the memory. The current settings will be called out when you next restart the driver. When you do not want to store the current settings, click again to turn off the check mark.

### Notes

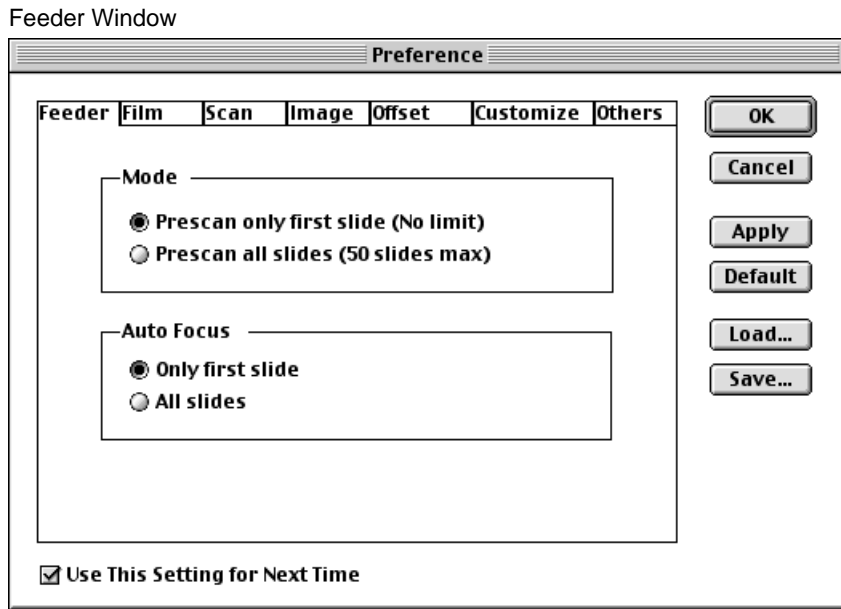
- Inactive options are shown in gray out.
- The Load... button does not function after previewing.

## Setting the Conditions

To get information about settings on each window, click the desired topic below:

- [Setting on Feeder Window \(page 12\)](#)
- [Setting on Film Window \(page 14\)](#)
- [Setting on Scan Window \(page 16\)](#)
- [Setting on Image Window \(page 19\)](#)
- [Setting on Offset Window \(page 21\)](#)
- [Setting on Customize Window \(page 23\)](#)
- [Setting on Others Window \(page 24\)](#)

## Setting on Feeder Window



The Feeder Window appears only when the UYA-S90SF Auto Slide Feeder is connected to the Film Scanner.

---

### Mode

**Prescan only first slide (No limit):** Prescans and previews the first slide set on the Auto Slide Feeder only. Adjust the preview image appropriately and start scanning. The other slides on the Auto Slide Feeder are scanned, without previewing, under the same conditions adjusted for the first slide.

You can stop scanning temporarily using the Pause button displayed during scanning to add slides to the Auto Slide Feeder.

**Prescan all slides (50 slides max):** Prescans up to 50 slides set on the Auto Slide Feeder continuously. After prescanning, all the frames are previewed. You can adjust frames as required and select the frames for scanning.

---

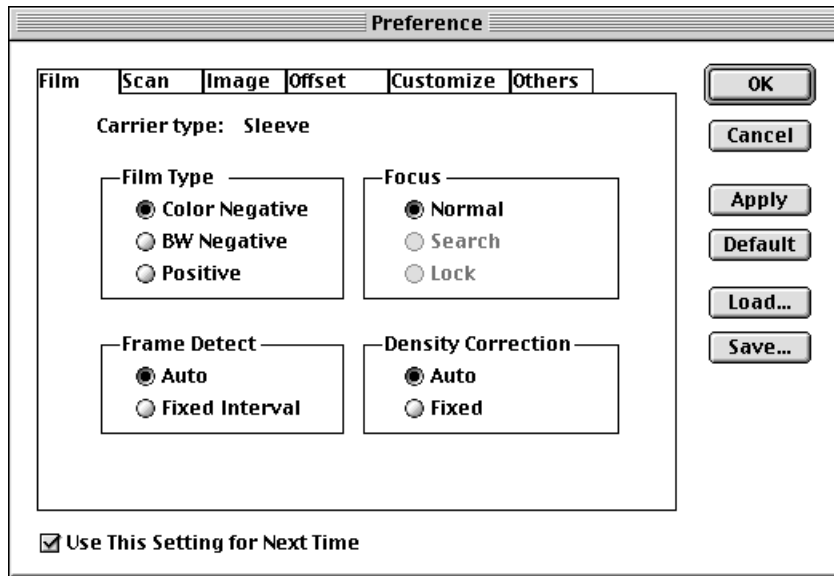
## Auto Focus

**Only first slide:** Adjusts the focus only for the first slide set on the Auto Slide Feeder. The other slides are prescanned and scanned with the same focus conditions adjusted for the first slide. Normally use this mode.

**All slides:** Adjusts the focus for each slide set on the Auto Slide Feeder. Use this mode when you want to adjust the focus precisely for every slide.

## Setting on Film Window

Film Window



---

### Film Type

Selects the type of the film to be scanned.

---

### Frame Detect

Selects the method of detecting frames on sleeve film.

**Auto:** Detects the positions of the frames on sleeve film automatically while previewing.

**Fixed Interval:** When images on positive film are dark and the sides of frames are not distinctive, the unit cannot detect the frames automatically, and some frames are skipped or the horizontal position of the frames are shifted considerably on the Preview Window. In this case, select Fixed Interval, remove the film, and retry previewing.

#### Tip

When you select Fixed Interval and preview the sleeve film, the unit separates the film into frames by a fixed length from the start of the film (from the frame with the highest frame number). Therefore, if the side of the frame coincides with the start of the film, the preview frames can be displayed approximately in the correct positions.

---

## Focus

Selects the focus mode for previewing and scanning.

**Normal:** Normally use this mode.

**Search:** (Slides only)

Use this mode when images are dark and have inadequate color shade. The unit searches for and focuses on the best part of each image for focusing.

**Lock:** Use this mode to lock in the focus adjusted in the previous previewing. Make sure that the correct focus was previously obtained for images of the same type film or in the same type slide mount.

### Note

Auto Focus is shown in gray out when the UYA-S90SF Auto Slide Feeder is used.

---

## Density Correction

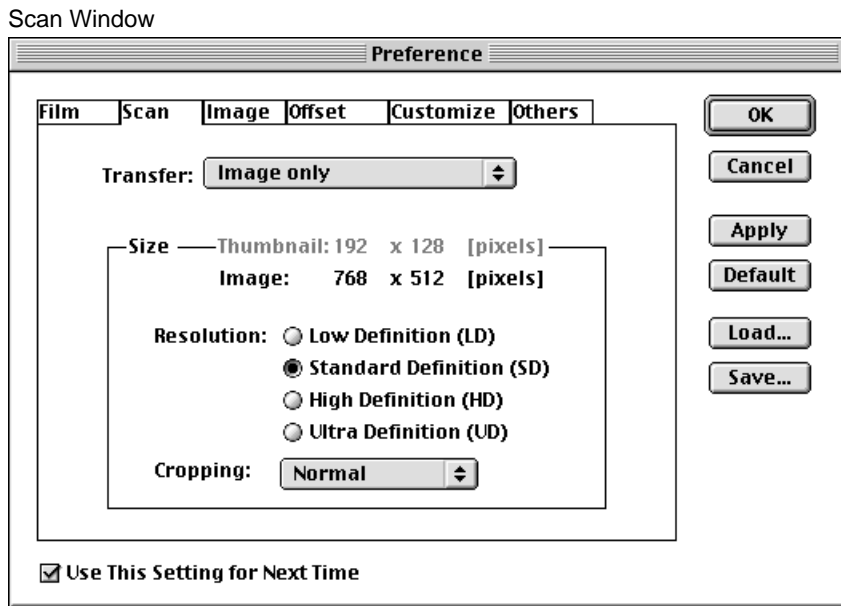
**Auto:** The unit automatically corrects the density and gray balance for each frame when previewing.

**Fixed:** The automatic correction does not function.

### Tip

When you preview many frames shot with the same background, for example, frames on which you shot persons one by one with the same background, select "Fixed." If the automatic correction functions in such a case, the color of the background may differ on individual frames, affected by the color of clothes, skin, hair, etc. of each person.

## Setting on Scan Window



### Transfer

Selects the type of image to be saved or transferred to the image processing application after scanning.

Select “Thumbnail only,” “Image only” or “Thumbnail and Image.”

#### Note

The preview images cannot be saved when the data format is set to JPEG in Scan Utility. If Transfer has been set to “Preview image only” or “Preview and Scan image,” a warning message appears when you set Data Format to JPEG and click Save during scanning.



---

## Size

### Thumbnail/Image

Displays the number of pixels to be transferred.

The number of pixels actually transferred differs according to the Cropping setting.

**Note**

When you select “Image only” on Transfer, Thumbnail is shown in gray out.  
When you select “Thumbnail only,” Image is shown in gray out.

### Resolution

Selects the scanning resolution.

**Note**

When you use the UY-S77 Film Scanner, you cannot select “Ultra Definition (UD)” for the IX240 cartridge film.

### Cropping

Selects the cropping mode to match the type of film and shooting mode. The image is cropped automatically when previewing and scanning. The options in each cropping mode differ according to the carrier in use as follows:

**When using the sleeve carrier (135 film):**

Normal: Normal image size of 135 film

Panoramic: Panoramic size of 135 film

**When using the slide carrier (135 film or IX240 film):**

Normal: Normal image size of 135 film

Slide: Normal image size of 135 film in slide mount

Panoramic: Panoramic size of 135 film in slide mount

IX240: Image size of IX240 film in slide mount

**When using the IX240 carrier (IX240 film):**

Auto: The image size is automatically detected by the optical marking on the IX240 film

HDTV: Normal image size of IX240 film

Panoramic: Panoramic size of IX240 film

Classic: Classic size of IX 240 film (Aspect ratio: 3 : 2)

**Note**

When “Auto” is selected for the IX240 carrier, the scanner detects the optical marking on the IX240 film which is normally provided with film in a one-time use camera, and sets the cropping mode to “Normal,” “Panoramic” or “Classic” automatically. If the IX240 film is not provided with the optical marking (such as film shot with a single-lens reflex camera), the cropping mode is fixed to HDTV for all frames regardless of the shooting mode.

---

## Resolution List

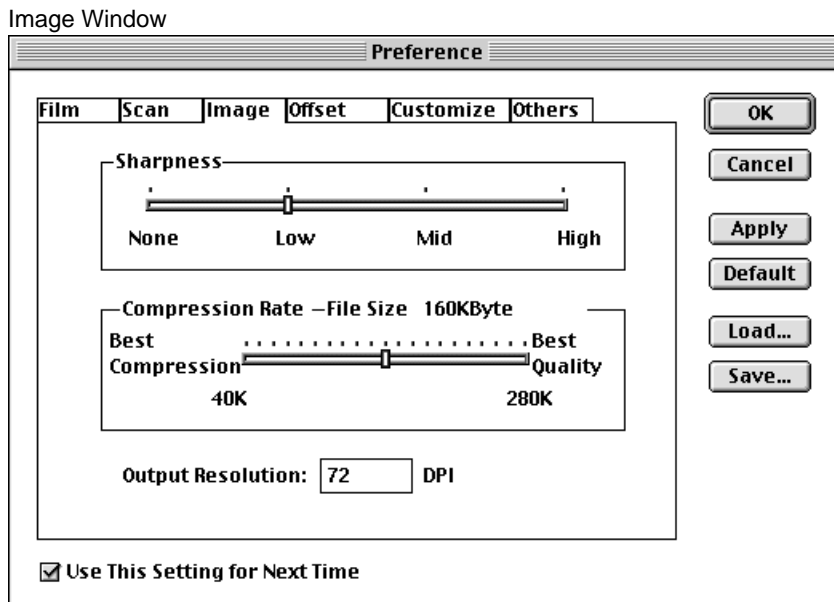
The following table shows the scanning resolutions in pixels which differ according to the Film Type, Cropping and Resolution settings.

(unit: pixels)

Film type	Cropping mode	Thumbnail	LD scan	SD scan	HD scan	UD scan
135 film	Normal	192 × 128	384 × 256	768 × 512	1536 × 1024	3072 × 2048
	Panoramic	192 × 68	384 × 136	768 × 272	1536 × 544	3072 × 1088
	Slide	176 × 116	352 × 232	704 × 464	1408 × 928	2816 × 1856
	Slide Panoramic	176 × 68	352 × 136	704 × 272	1408 × 544	2816 × 1088
IX240 film	IX240 Slide	144 × 80	288 × 160	576 × 320	1152 × 640	2304 × 1280
	HDTV	192 × 108	456 × 256	912 × 512	1824 × 1024	3648 × 2048*
	Panoramic	192 × 68	456 × 160	912 × 320	1824 × 640	3648 × 1280*
	Classic	160 × 108	384 × 256	768 × 512	1536 × 1024	3072 × 2048*

\* For the UY-S90 Film Scanner only

## Setting on Image Window



---

### Sharpness

Selects the sharpness of the image for scanning.

Slide the bar to select the sharpness level between None/Low/Mid/High.

---

### Compression Rate

Selects the compression rate with which the unit compresses the data of the scanned images for saving.

Slide the bar to the left for higher compression rate and reduced data size, and to the right for lower compression rate and better image quality.

The maximum data size which differs according to the Resolution setting on the Scan Window is displayed in KByte beside File size.

#### Notes

- The Compression Rate may be inactive when the Film Scanner software runs from an image processing application.
- The File Size value being displayed is the maximum size. The size of the data actually compressed differs according to the image.

---

## Output Resolution

Selects the resolution of your monitor or printer in DPI.

### Example:

72 DPI (default): Standard resolution of a monitor

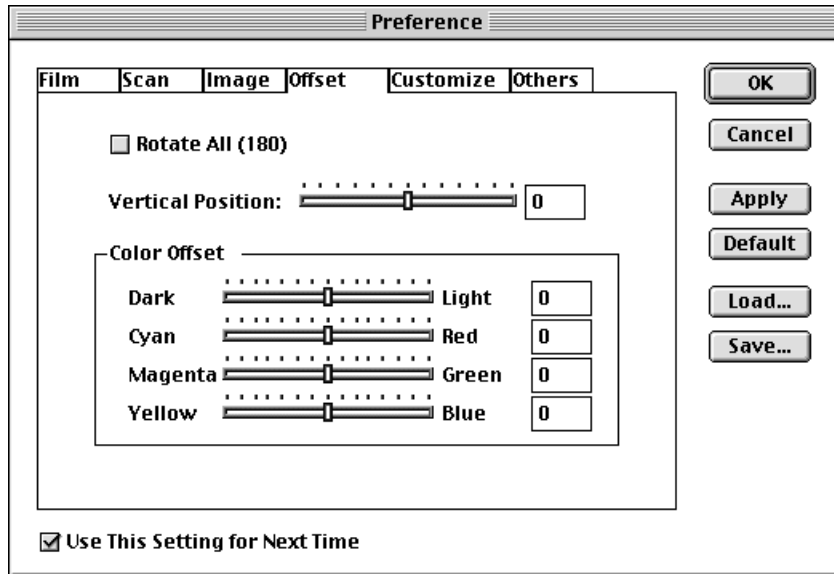
300 DPI: Resolution of Sony UP-D70A printer, etc.

#### Notes

- If the Output Resolution setting is incorrect, the size of the scanned image changes when you display it on your monitor or print it.
- When the data format is set to JPEG in Scan Utility, the output resolution of the saved image may be different from the value set with this option depending on the application with which you open the file.

## Setting on Offset Window

Offset Window



---

### Rotate All (180°)

With some kinds of film, all the preview frames are displayed upside down. To rotate all the frames by 180°, click and show check mark on Rotate All (180°). To rotate again, click to turn off the check mark.

---

### Vertical Position

Adjusts the vertical position of all the preview frames together.

Slide the bar to the right to display the upper portion of the images in all the frames, and to the left to display the lower portion. The adjustment value is displayed in the dialog box. You may type your adjustment value directly in the dialog box (-6 to 6, in increments of one).

---

## Color Offset

### **Density (Dark - Light)**

Adjusts the density of all the preview frames together. Slide the bar toward Dark for making images darker, and toward Light for making them lighter. The adjustment value is displayed in the dialog box. You may type your adjustment value directly in the dialog box (-20 to 20, in increments of one).

### **Colors (Cyan - Red, Magenta - Green, Yellow - Blue) (for color film)**

Adjusts the colors of all the preview frames together. Slide the bars to get your preferred colors. The adjustment values are displayed in the dialog boxes. You may type your adjustment values directly in the dialog boxes (-20 to 20, in increments of one).

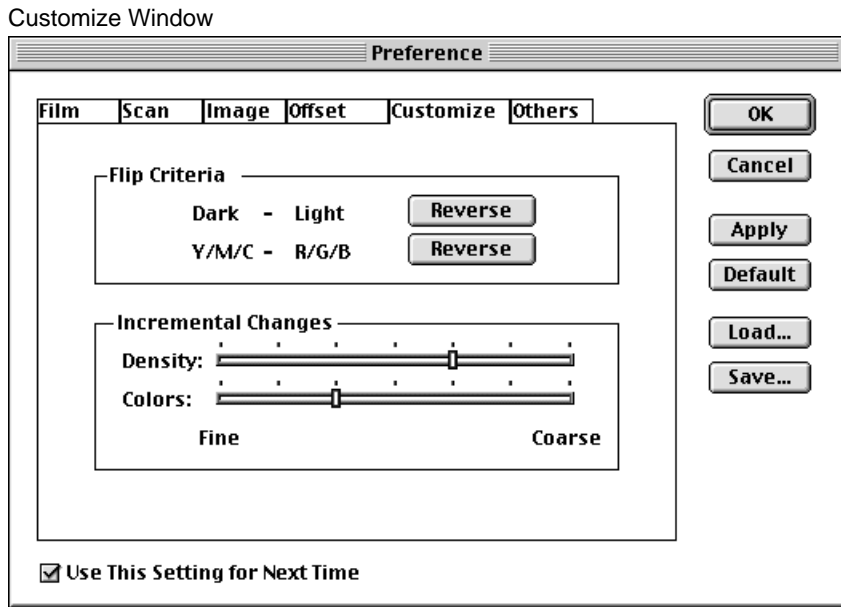
### **Contrast (Low - High) (for monochrome film)**

Adjusts the contrast of all the preview frames together. Slide the bar toward Low for lower contrast, and toward High for higher contrast. The adjustment value is displayed in the dialog box. You may type your adjustment value directly in the dialog box (-20 to 20 in increments of one).

**Tip**

The adjustment values set on the Offset Window are also displayed at the bottom of the Preview Window.

## Setting on Customize Window



### Flip Criteria

Reverses the criteria of the Color Offset bars in the Offset Window. This setting is reflected to the Color Offset bars on the Preview Window.

**Dark - Light:** Click Reverse to change the left end of the Dark - Light bar to Light, and the right end to Dark. Click again to restore the original criteria.

**Y/M/C - R/G/B (for color film):** Click Reverse to change the left ends of the Cyan - Red, Magenta - Green, Yellow - Blue bars to Red, Green and Blue, and the right ends to Cyan, Magenta and Yellow respectively. Click again to restore the original criteria.

**Low - High (for monochrome film):** Click Reverse to change the left end of the Low - High bar to High, and the right end to Low. Click again to restore the original criteria.

### Incremental Changes

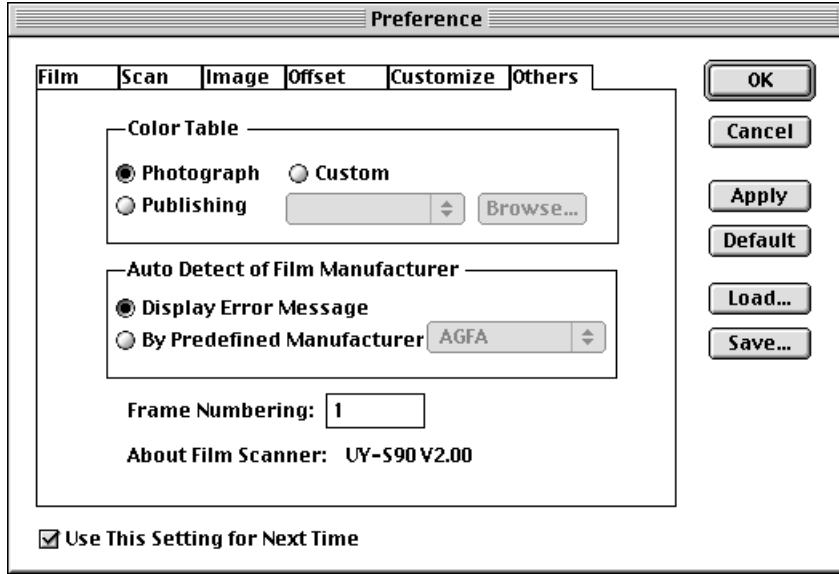
Changes the incremental rate of adjustment for the Color Offset bars in the Offset Window. This setting is reflected to the Color Offset bars on the Preview Window. Slide the bar to the left for finer incremental rate, and to the right for coarser incremental rate.

**Density:** Changes the incremental rate for the Dark - Light bar.

**Colors:** Changes the incremental rate for the Cyan - Red, Magenta - Green, Yellow - Blue bars together.

## Setting on Others Window

Others Window



### Color Table

Selects the color table for scanning.

**Photograph:** Normally use this mode to perform color correction so that the scanned image is similar to the photograph print.

**Publishing:** Use this mode when you intend to use the scanned image for publishing. The color correction appropriate for printing is performed.

**Custom:** Use this mode when you want to use your own color table. Display your color table in the box under Custom. Use Browse... to find the color table.

#### Tips

- The linear table (linearlut.lut) is supplied with the unit. Use it for creating your own color table. 3D-LUT Linear is shown in the Custom box when you select the reference color table.
- The color table should have “.lut” extensions.



---

## Auto Detect of Film Manufacturer

The unit detects the film manufacturer from the DX code on the color negative and performs automatic correction to match the film manufacturer.

This option selects the countermeasure for cases when the unit cannot detect the film manufacturer from the DX code.

**Display Error Message:** If the film manufacturer cannot be detected, a message “DX code is not found. Check film direction and reload the film when necessary” appears every time. Select Ignore, and Film Manufacturer window appears. By selecting the film manufacturer, you can proceed to previewing.

**By Predefined Manufacturer:** Select the film manufacturer in the dialog box (AGFA, FUJI, KODAK, KONICA or Others). If the film manufacturer cannot be detected, the unit will automatically proceed to previewing without displaying the error message.

---

## Frame Numbering

When Frame No. Select is set to From Film in Scan Utility, use this option to specify the frame number with which the scanned image is saved. If the unit cannot detect the frame number from the DX code, the images will be saved with the file name followed by ascending two-digit frame numbers from the number specified here.

**Example:** When the file name “Test” is entered in Scan Utility (page 50)

- If you type 7 here, the saved images are named Test07, Test08 and after.
- Preview images (thumbnails) are named with “th” before the frame number (Testth07, Testth08 and after)
- To scan the whole sleeve film, specify “XX” (the first frame number at the start of the film), then the images are named Test0XX, Test0X, Test0@, Test00, Test01, Test02 and after.

### Tip

There are normally no images shot on two or three frames at the start of the film to allow film loading. Therefore, the frame numbers on film are given XX, X, 00, 0, 1, 2 and after from the start of the film. (There may be slight differences in numbering depending on the film manufacturer.)

If you enter the first frame number given on your film (for example, XX) on “Frame Numbering,” the file name of each saved image will coincide with the frame number actually given on film. Use this function when the film does not have the DX code or has the DX code with no frame number included.

---

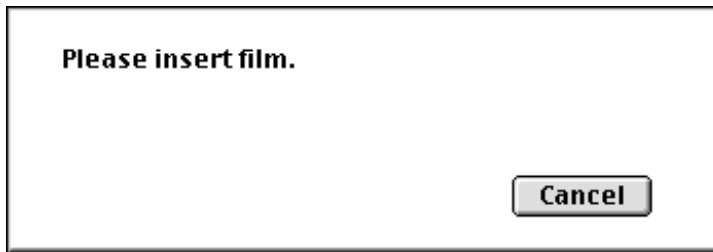
## About Film Scanner

Indicates the version of the Film Scanner firmware.

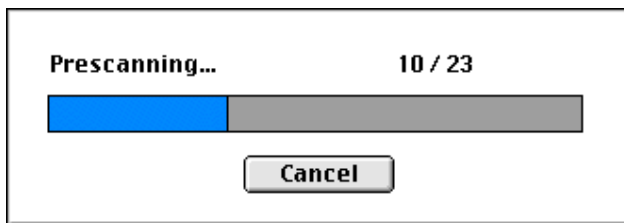
# Previewing Images

Before actual scanning, the unit prescans the images to temporarily store the data in the memory and previews them on the monitor screen. During prescanning, the unit measures and automatically adjusts the exposure conditions, colors and density of the film. You may also add adjustments to the preview images.

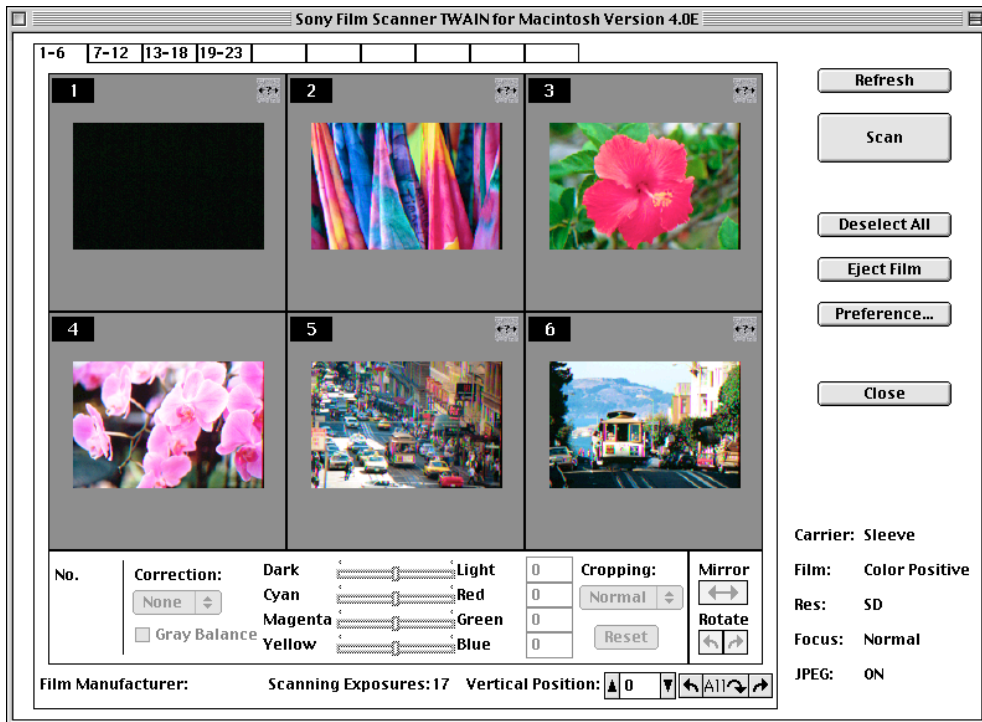
- 1 Click Preview.  
Message “Please insert film” appears.



- 2 Insert film into the carrier.  
(For information about how to insert film, refer to the Operating Instructions supplied with the Film Scanner.)  
The film is loaded automatically and prescanning starts.



When prescanning is complete, the Preview Window appears.



### 3 Check the horizontal positions of the frames.

If the unit cannot recognize the frames correctly, it cannot perform the automatic adjustments to color and density correctly while previewing. This causes irregular color in preview images. In this case, correct the horizontal positions of the frames and click Refresh to perform the automatic adjustments again.

#### Note

When you preview sleeve film, the frames may be skipped or shifted considerably. In this case, change the setting of “Frame Detect” on the Film Window to “Fixed Interval,” remove the film, and retry previewing.

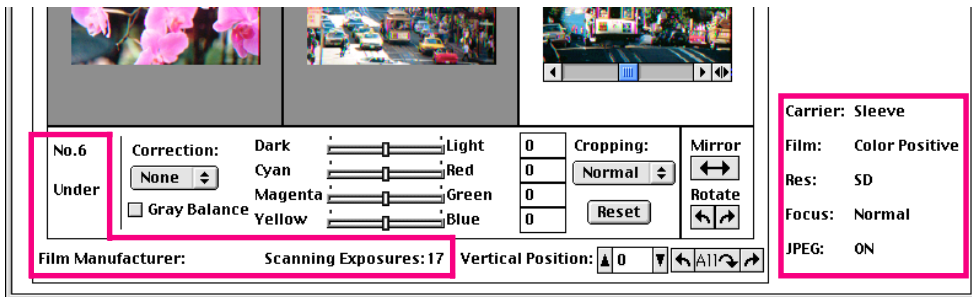
#### [Related topics]

- Meanings of settings on Preview Window ([page 28](#))
- To select images to be scanned ([page 29](#))
- To adjust preview images ([page 31](#))
- To scan images ([page 46](#))
- To scan without previewing ([page 47](#))

## Meanings of settings on Preview Window

This section shows the information about the settings made on windows other than the Preview Window but displayed on the Preview Window.

For the information about the options which can be set on the Preview Window, refer to “Adjusting Preview Images.”



### Display on the lower right of the window

**Carrier:** Type of carrier in use (Sleeve / Slide / IX240)

**Film:** Film Type set on the Film Window (Color Negative / Monochrome / Color Positive)

**Res:** Scanning Resolution set with the Image Size on the Scan Window (LD / SD / HD / UD)

**Focus:** Focus mode set on the Film Window (Normal / Search / Lock)

**JPEG:** JPEG setting on the image processing application (ON/OFF)

It does not appear when the Scan Utility is used.

### Display on the lower left of the window

**No. XX:** Frame number currently selected for adjustment

It does not appear when no frame is selected.

**Under:** Exposure condition of the frame currently selected (Normal / Under / Over / Ultra Over)

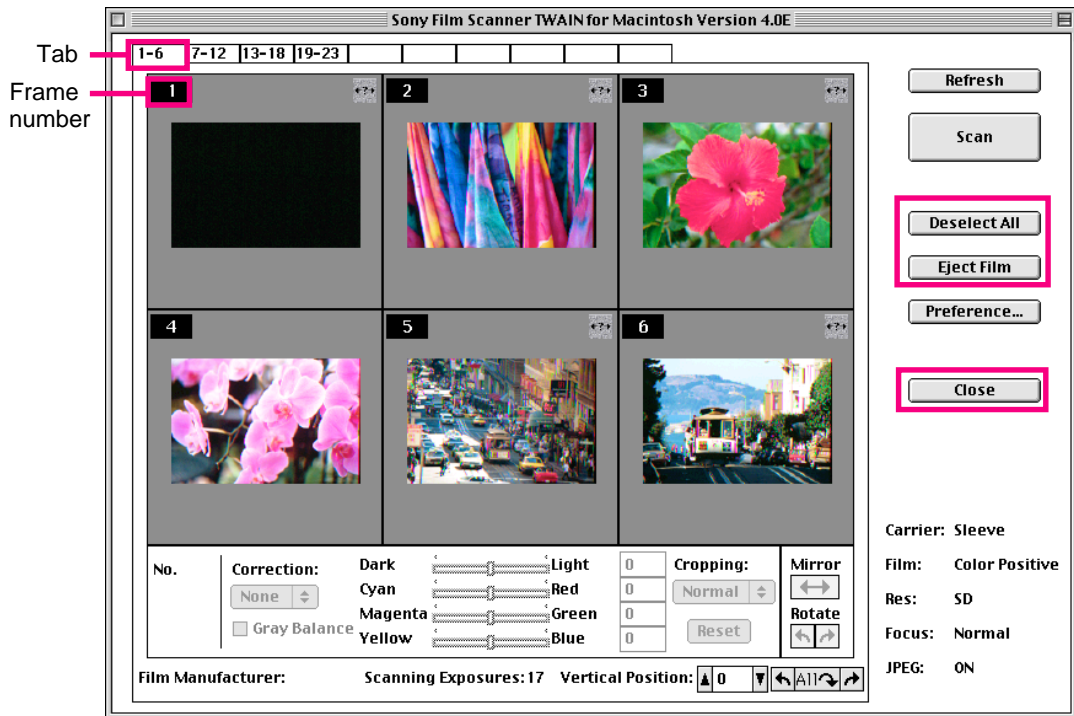
It does not appear when no frame is selected.

**Film Manufacturer:** Name of the manufacturer of the film loaded

It does not appear for slides, monochrome film or film without DX code.

**Scanning Exposures:** Number of frames to be scanned

# Selecting Images to be Scanned



## Switching to 6 frames on the screen

If your film has more than 6 images, click the tab on the top of the window such as 1-6, to display the other 6 frames.

## Selecting frames to be scanned

On the Preview Window, the frame number on the upper left of the frame that the unit has judged to be with a image is selected and displayed with a white number on the black background. The frames with their frame numbers reversed will be scanned.

If you want to skip scanning certain frame(s), click the frame number to cancel the selection.

---

## Deselecting/selecting all frames for scanning

Click Deselect All on the right of the window. All the reversed frame numbers are deselected and the name of the button changes to Select All.

To return to scan all frames, click Select All.

**Tip**

This function is useful when you want to scan a few frames only. After clicking Deselect All, click to select the desired frame numbers only.

---

## Closing the Preview Window without scanning

Click Close.

---

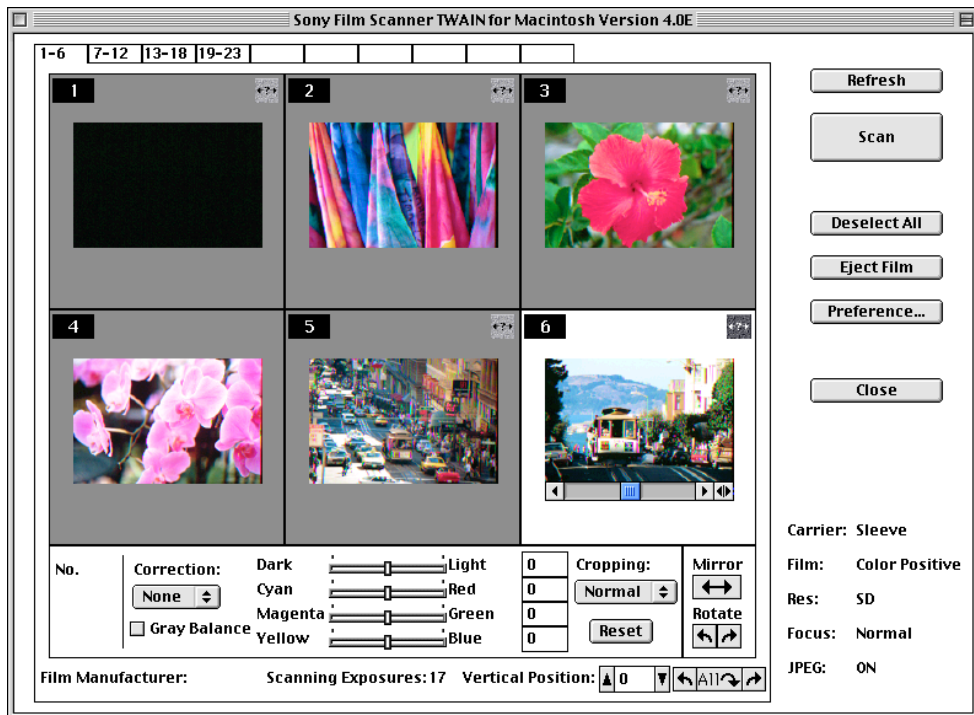
## Ejecting the film without scanning

Click Eject Film.

**[Related topics]**

- [Meanings of settings on Preview Window \(page 28\)](#)
- [To adjust preview images \(page 31\)](#)
- [To scan images \(page 46\)](#)

# Adjusting Preview Images



## To select the frame(s) with which you work

Click on the image. The background color turns to white to indicate that the frame is selected.

To deselect all the frames, click the mouse outside the image area.

## To select multiple frames

Hold the Shift or Ctrl key on the keyboard and click on the images you want to select one after another. The settings for the last selected frame are displayed on the Preview Window.

You can adjust the horizontal position, rotating, cropping, density, colors, contrast and correction level for the selected frames simultaneously.

### Note

If you change a setting on the Preference Window after you have adjusted frames on the Preview Window, the changed settings will be applied to all frames, and, consequently, the setting you have performed for a specified frame on the Preview Window will be changed. We recommend that you set on the Preference Window before adjusting frames one by one.

## [Related topic]

- To set the preview conditions on the Preference Window (*page 10*)

---

## List of adjustment items

To display the information, click the desired topic.

### Positioning, rotating and cropping

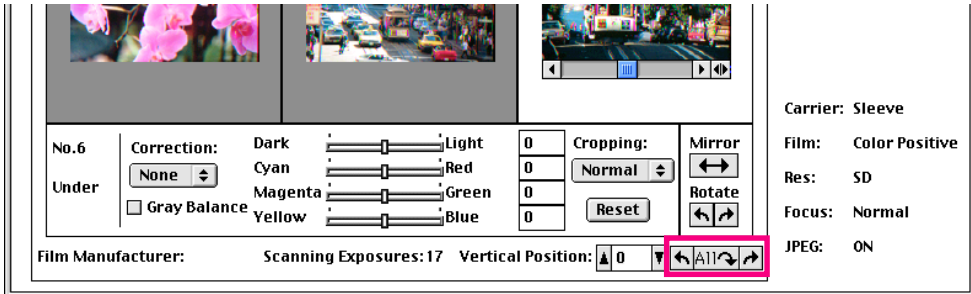
- Rotating all frames simultaneously (*page 33*)
- Adjusting vertical position (*page 34*)
- Adjusting horizontal position (*page 35*)
- Rotating by 90° (*page 36*)
- Mirroring (*page 37*)
- Cropping (*page 38*)

### Color adjustment

- Refreshing color and density (*page 39*)
  - Adjusting density (*page 40*)
  - Adjusting colors (for color film) (*page 41*)
  - Adjusting contrast (for monochrome film) (*page 42*)
  - Selecting correction level (for color negatives) (*page 43*)
  - Adjusting gray balance (for color film) (*page 44*)
- 
- Resetting to original image (*page 45*)


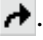

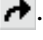


## Rotating all frames simultaneously



With some kinds of film, all the preview images are displayed upside down or on their side.

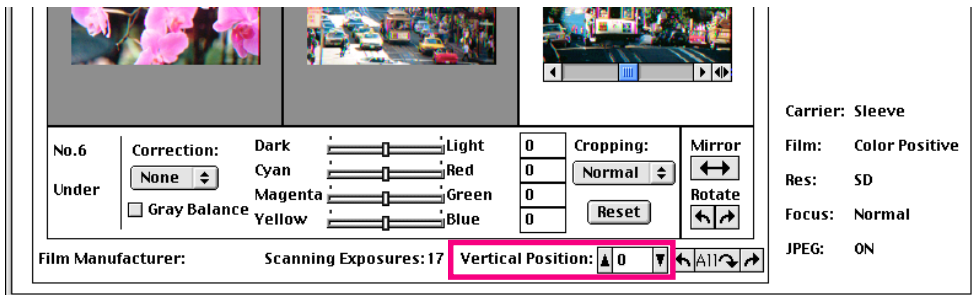
**To rotate all the frames by 180°:** Click .  mark appears on the lower left of the frames. To rotate again, click  again.

**To rotate all the frames by 90°:** Click  or . Each time you click  or , all the frames rotate by 90° counterclockwise or clockwise respectively. The rotate indicator arrow appears on the lower left of each frame.

### Tip

If you are sure that preview images will be displayed upside down with your film, click to show check mark on Rotate All (180°) on the Preference - Offset Window.

## Adjusting vertical position



Adjusts the vertical position of all the frames together.

Click ▲ or ▼ of Vertical Position dialog box to scroll the images in all the frames vertically. The adjustment value is displayed in the dialog box. You may type your adjustment value directly in the dialog box (-6 to 6, in increments of one).

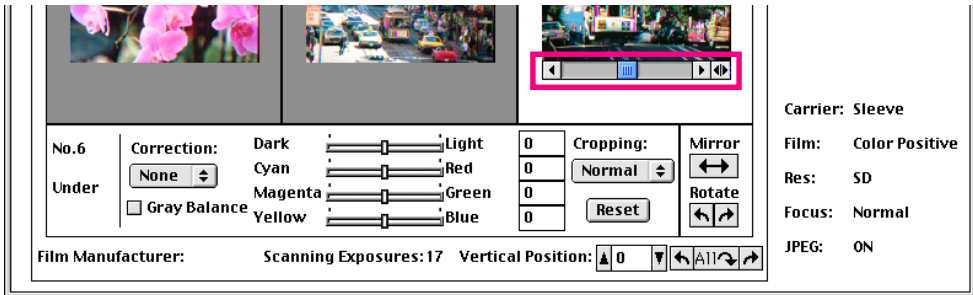
### Note

Click slowly to allow a sufficient response time for the images to move.

### Tip

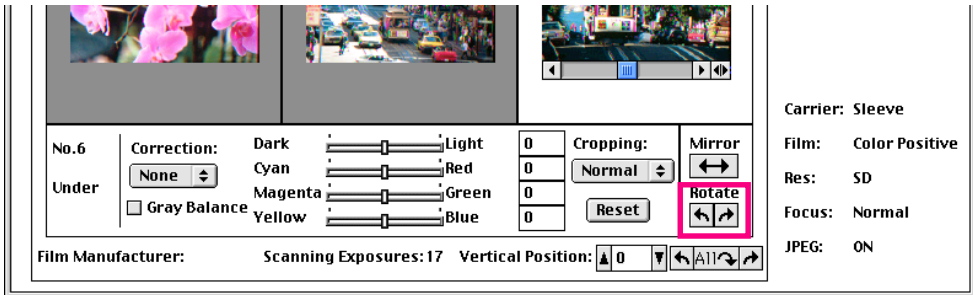
If you are sure that preview images will be shifted upside down with your film, set your adjustment value on Vertical Position on the Preference - Offset Window.



## Adjusting horizontal position



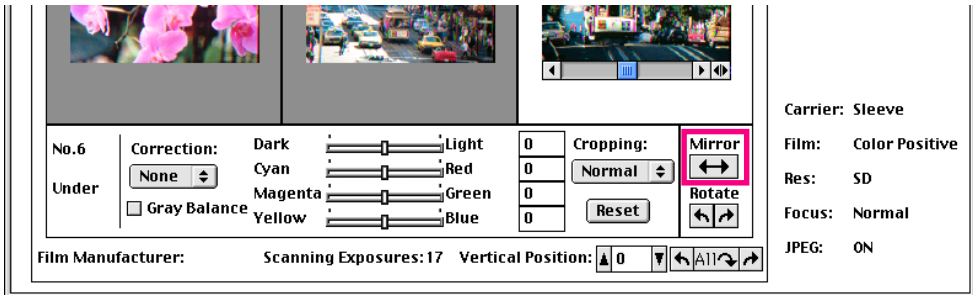
Select the frame, and the scroll bar for the horizontal position adjustment appears beside the image. To move the image right and left, click the scroll arrows ◀ ▶ at the ends of the scroll bar or drag the scroll box ▬. Click ◀▶ to restore the image to the original position.



## Rotating by 90°



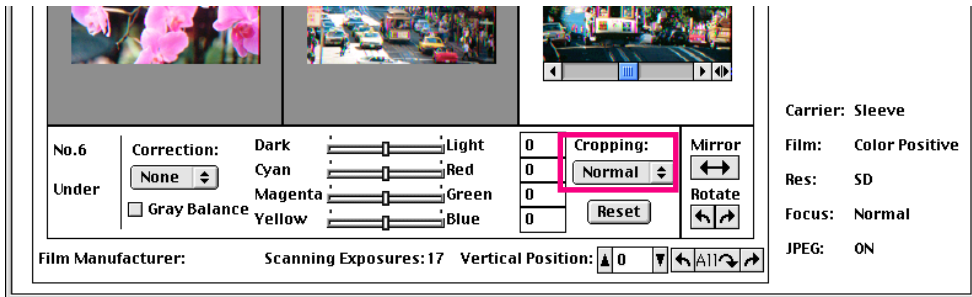
Select the frame and click Rotate  or  to rotate the image by 90° counterclockwise or clockwise respectively. The rotate indicator arrow appears on the lower left of the frame.

## Mirroring



Select the frame and click Mirror  to reverse the image horizontally. The mirror indicator arrow appears on the lower left of the frame. Click Mirror  again to restore the original image.

## Cropping



Select the cropping mode to match the type of film and shooting mode. The image is cropped automatically when previewing and scanning. The options in each cropping mode differ according to the carrier in use as follows:

### When using the sleeve carrier (135 film):

Normal: Normal image size of 135 film

Panoramic: Panoramic size of 135 film

### When using the slide carrier (135 film or IX240 film):

Normal: Normal image size of 135 film

Slide: Normal image size of 135 film in slide mount

Panoramic: Panoramic size of 135 film in slide mount

IX240: Image size of IX240 film in slide mount

### When using the IX240 carrier (IX240 film):

Auto: The image size is automatically detected by the optical marking on the IX240 film

HDTV: Normal image size of IX240 film

Panoramic: Panoramic size of IX240 film

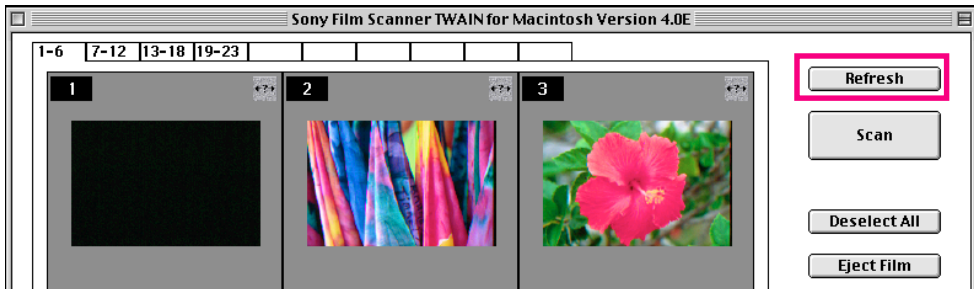
Classic: Classic size of IX 240 film (Aspect ratio: 3 : 2)

The cropping indicator **[P]** (Panoramic), **[S]** (Slide) or **[C]** (Classic) appears on the lower right of the frame. (No indicator appears with Normal or HDTV setting.)

#### Tip

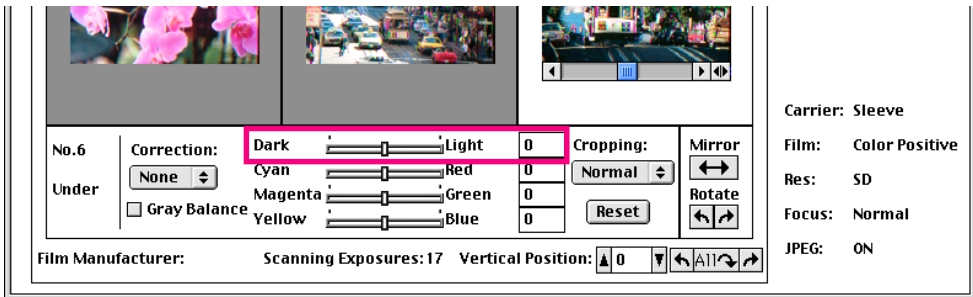
If you are sure of the type of film and the shooting mode of your film, set Cropping on the Preference - Scan Window.

## Refreshing color and density



If the unit cannot recognize the frames correctly, it cannot perform the adjustments to color and density correctly while previewing. This causes irregular color in preview images. In this case, correct the horizontal positions of the frames and click Refresh to perform the adjustments again.

## Adjusting density (Dark - Light)



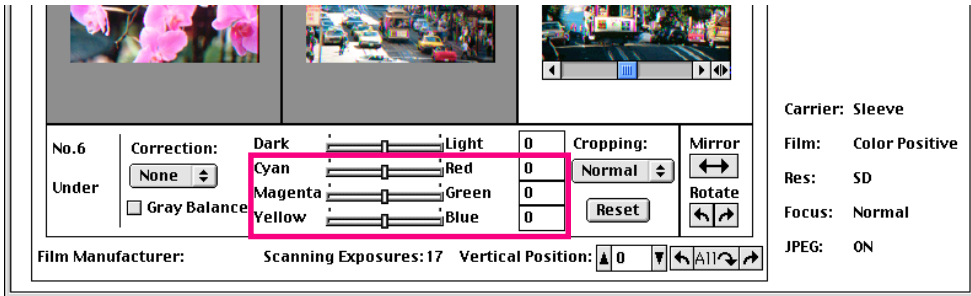
Select the frame and slide the bar toward Dark for making the image darker, and toward Light for making it lighter. The adjustment value is displayed in the dialog box. You may type your adjustment value directly in the dialog box (-20 to 20, in increments of one).

### Tips

- You can reverse the criteria of the Dark - Light bar by setting Flip Criteria of Dark - Light to Reverse on the Customize Window.
- If you are sure that density adjustment is necessary with your film, due to the shooting conditions, etc., set your adjustment value on Color Offset on the Preference - Image Window.



## Adjusting colors (Cyan - Red, Magenta - Green, Yellow - Blue) (for color film)

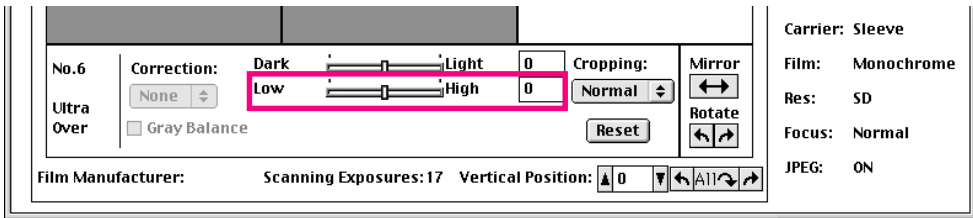


Select the frame and slide the three bars to get your preferred colors. The adjustment values are displayed in the dialog boxes. You may type your adjustment values directly in the dialog boxes (-20 to 20, in increments of one).

### Tips

- You can reverse the criteria of the three bars by setting Flip Criteria of Y/M/C - R/G/B to Reverse on the Customize Window.
- If you are sure that color adjustment is necessary with your film, due to the shooting conditions, etc., set your adjustment values on Color Offset on the Preference - Image Window.

## Adjusting contrast (Low - High) (for monochrome film)

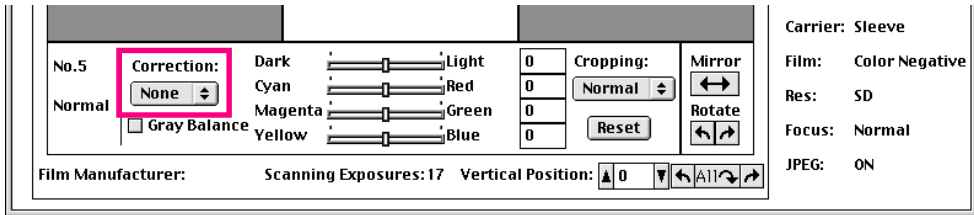


Select the frame and slide the bar toward Low for lower contrast, and toward High for higher contrast. The adjustment value is displayed in the dialog box. You may type your adjustment value directly in the dialog box (-20 to 20, in increments of one).

### Tips

- You can reverse the criteria of the Low - High bar by setting Flip Criteria of Low - High to Reverse on the Customize Window.
- If you are sure that contrast adjustment is necessary with your film, due to the shooting conditions, etc., set your adjustment value on Color Offset on the Preference - Image Window.

## Selecting correction level (for color negatives)



This unit adjusts the color balance of each frame using the color data of all the frames on the film and that of the selected frame equally.

This method is not adequate if the tint of the selected frame is very different from the other frames, so the unit has five options. Choose the most suitable option for the selected frame in the Correction dialog box.

**None:** Standard correction

**F1:** Full correction 1

Adjusts the color balance using the color data of the selected frame only.

**F2:** Full correction 2

Adjusts the color balance, giving most weight to the color data of the selected frame and adding the data of all the frames.

**L1:** Lowered correction 1

Adjusts the color balance, giving most weight to the color data of all the frames and adding the data of the selected frame.

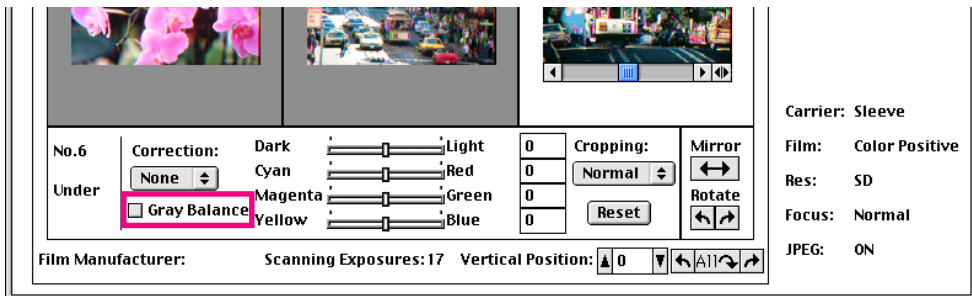
**L2:** Lowered correction 2

Adjusts the color balance using the color data of all the frames only.

**F1** and **F2** are effective when a specified frame on the film is shot under different lighting conditions.

**L1** and **L2** are effective when the majority of a specified frame is in one color.

## Adjusting gray balance (for color film)



The gray balance adjusts the color balance of the whole image by specifying the gray in the image.

- 1 Select the frame.
- 2 Click the check box on Gray Balance.  
The ? symbol appears on the check box.
- 3 Drag the ? symbol to the image to be adjusted.  
The shape of the ? symbol changes to the  $\text{G}$  pointer.
- 4 Drag the  $\text{G}$  pointer to the portion of the image which you want to specify as gray, and click once.  
Then the color of the whole image is adjusted so that the specified portion becomes gray.

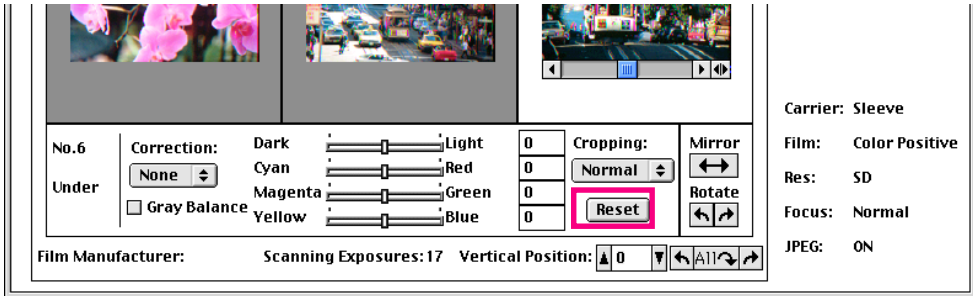
### To restore the original color

Click the check box on Gray Balance to turn off the check mark.

#### Notes

- To cancel the ? symbol in gray balance mode before adjustment, press the Esc (Escape) key or press the  $\text{H}$  (Command) key and . (period) key simultaneously on the keyboard.
- When you click on the image which has been adjusted in gray balance mode, the pointer changes to  $\text{G}$ . The pointer will return to arrow by moving it out of the image.
- You cannot adjust the gray balance for multiple frames simultaneously, even if you have selected the frames.

## Resetting to original image



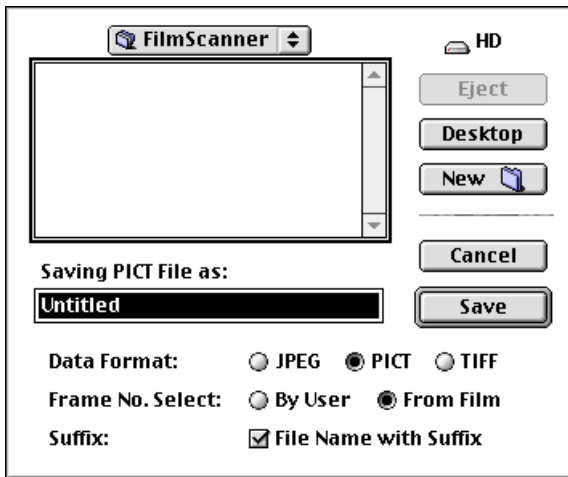
Select the frame and click Reset. The cropping, density, colors, contrast, gray balance and correction level are reset to the following settings.

Cropping	Setting on the Preference - Scan Window
Density	Setting on the Preference - Offset Window
Colors	Setting on the Preference - Offset Window
Contrast	Setting on the Preference - Offset Window
Gray balance	Original color
Correction level	None

# Scanning Images

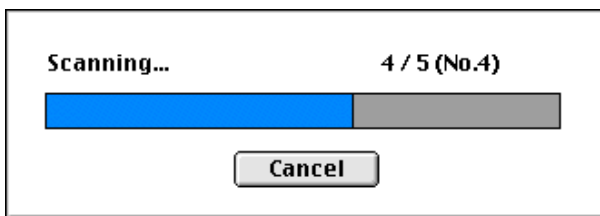
## Scanning after previewing

- 1 When you have selected the images to be scanned and performed adjustments, click Scan on the Preview Window.
- 2 When the Scan Utility is used, the following window appears. Specify the saving method for the scanned images.
  - To specify the saving method for the scanned images, click [here](#). (page 49)

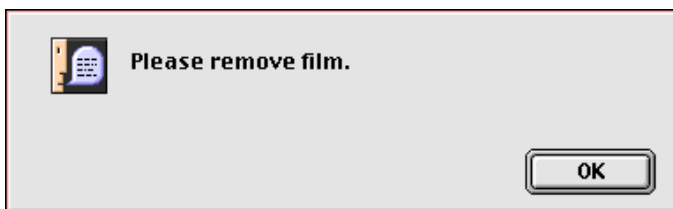


After specifying the saving method, click Save. Scanning starts.

When an image processing application is used, scanning starts immediately after you have clicked Scan in step 1.



- 3 When scanning is complete, “Please remove film” message appears. Remove the film and click OK.



### To preview another film

Click Preview on the Preview Window and insert film.

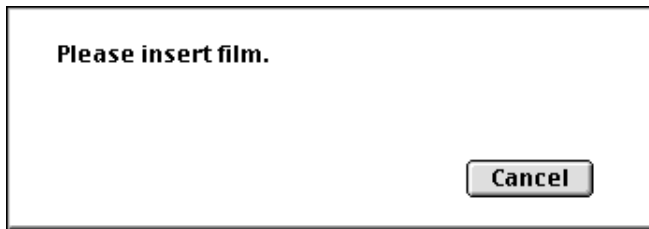
---

## Scanning without previewing

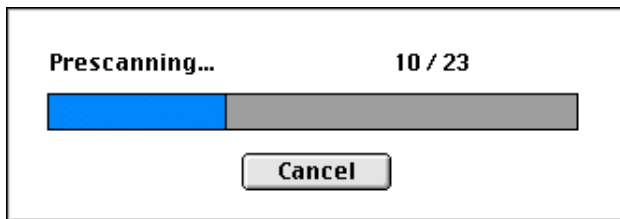
You can execute prescanning and scanning continuously without displaying preview images.

The unit scans frames according to the conditions predetermined on the Preference Window.

- 1 Click Scan on the Preview Window.  
“Please insert film” message appears.

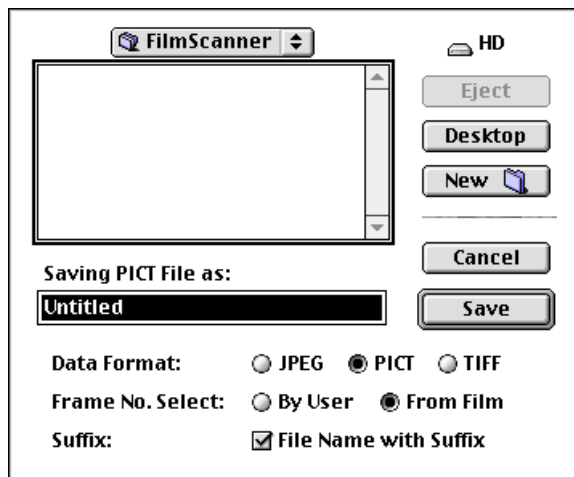


- 2 Insert film into the carrier.  
(For information about how to insert film, refer to the Operating Instructions supplied with the Film Scanner.)  
The film is loaded automatically and prescanning starts.

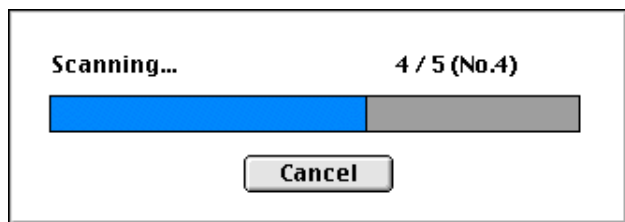


**3** When the Scan Utility is used, the following window appears after prescanning. Specify the saving method for the scanned images.

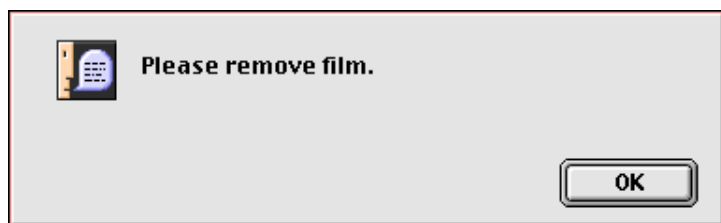
- To specify the saving method for the scanned images, click [here](#). (page 49)



After specifying the saving method, click Save. Scanning starts.



**4** When scanning is complete, “Please remove film” message appears. Remove the film and click OK.



### To scan another film

Click Scan on the Preview Window and insert film.

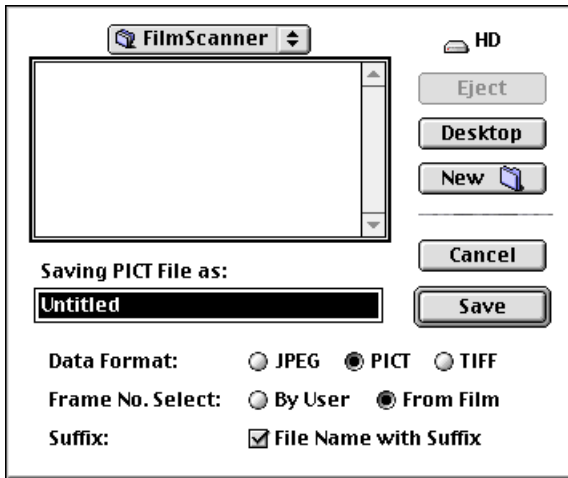
#### Note

As scanning without previewing detects frames automatically according to the predetermined conditions, frames with no image may be scanned or frames with an image may not be scanned correctly, depending on the film condition.



## Specifying the saving method for the scanned images

When you click Scan in the Scan Utility, the following window appears. You can specify the location, the file type, the folder name and the file name when saving images.



### [Related topics]

- To specify the method of numbering the frames to be saved ([page 50](#))
- To specify the saving file type of images ([page 51](#))
- To specify the folder name and file name to save images ([page 52](#))

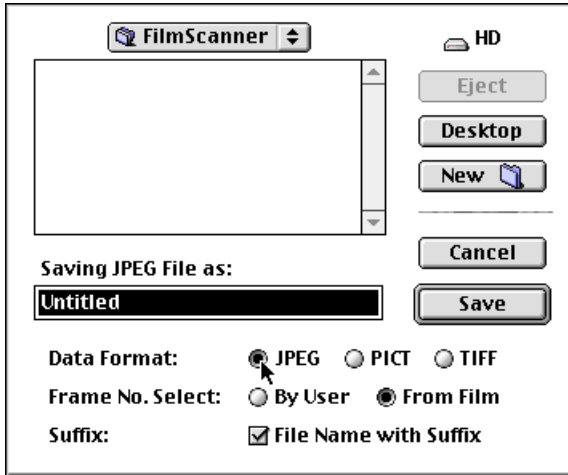


---

## Saving file type (Data Format)

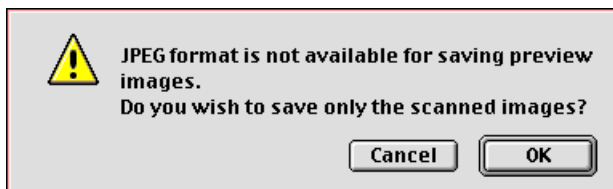
Select the saving file type of images (Data Format).  
Click JPEG, PICT or TIFF.

If you click and show check mark in the File Name with Suffix check box, a suffix is automatically added to a file name.



### Note

The preview images cannot be saved when Data Format is JPEG. If you have set Transfer on the Preference - Scan Window to “Preview image only” or “Preview and Scan image,” the following warning appears when you click Save.



Click OK to save the scanned images only.  
Click Cancel to return to the Preview Window. Then change the Data Format or the Transfer setting on the Preference - Scan Window.

---

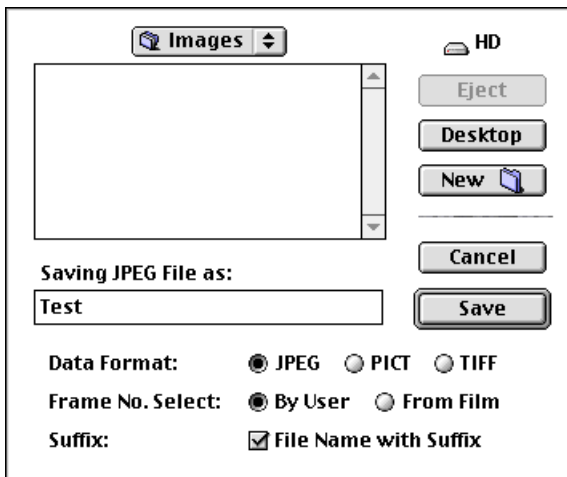
## Folder name and file name to save images

### To save in a new folder with a new file name

**1** Click New  and create a desired folder name.  
**Example:** Name “Images.”

**2** In the “Saving File as:” dialog box, type a file name for the scanned images.  
When Frame No. Select is set to By User, the images will be saved with the typed file name followed by ascending five-digit frame numbers from 00001.

**Example:** If you type “Test” as File name, the images are saved with the names Test00001, Test00002 and so on.

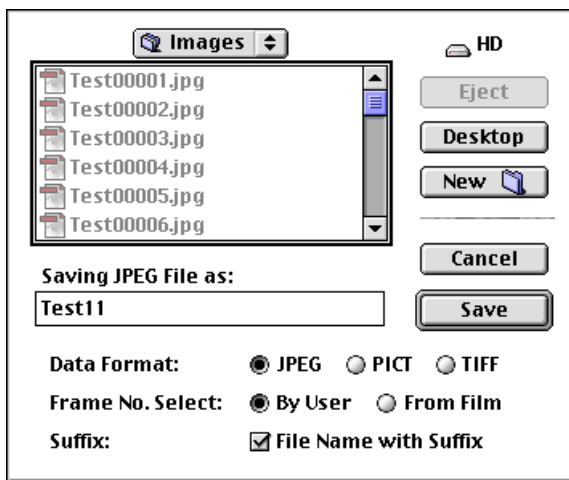


## To save in an existing folder with an existing file name

- 1 Specify the folder name in which you want to save the scanned images.
- 2 In the “Saving File as:” dialog box, type the file name with the next ascending number (i.e. the one after the last existing number). You can omit zeros at the beginning.

When Frame No. Select is set to By User, the images will be saved with the typed file name followed by the succeeding five-digit numbers.

**Example:** If you want to name the images Test00011 and after, type “Test11.”



### Note

When Frame No. Select is set to From Film, the file name you type in the “Saving File as:” box is not effective.

---

## Naming the file

The scanned images are saved with a name consisting of the file name and five-digit frame number. When scanning two or more pictures, the succeeding frame numbers are set beginning from the specified number.

Specify the file name in the “Saving File as:” dialog box as follows:

**a. To set a frame number from 00001**

Input a file name only.

**Example:** If you type Test, Test00001 will be set.

**b. To set the succeeding frame numbers in an existing file name**

Input a file name and frame number. (0 can be omitted.)

**Example:** If you type Test7, Test00007 will be set.

**c. To overwrite an existing file**

Input the existing file name and frame number as in **a** and **b**.

**Tips**

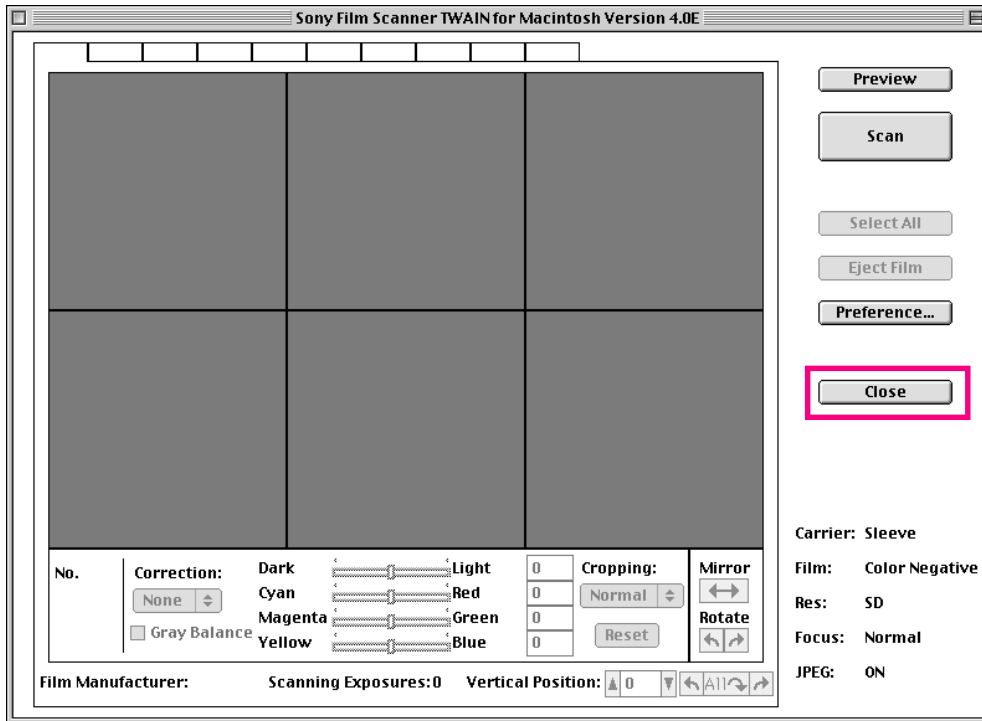
- A file name can include periods (.). However, a file name of periods only cannot be used.
- The Scan Utility retains the memory of the last existing number until it closes, and, when scanning, displays the next frame number in the “Saving File as:” dialog box.

**Notes**

- The Scan Utility allows 00000 to 99999 frame numbers only. If another number is input, a message “Invalid file name” appears and the window returns to the “Saving File as:” dialog box.
- When the frame number reaches 99999, it cannot continue to 00001. If the frame number exceeds 99999 while scanning, a message “Invalid file name. Please change frame number.” appears.

# Quitting Scan Utility

Click Close on the Preview Window.



## Message List

- **Please set the carrier.**
- **Please remove film.**
- **Please remove cartridge.**
- **Please remove slide.**
- **Please insert film.**
- **Please insert cartridge.**
- **Please insert slide.**
- **Please remove film.**
- **Please remove cartridge.**
- **Please remove slide.**
- **Please remove the slide from carrier.**
- **Please remove the slide from feeder.**
- **Scanner connection error.**  
**Check scanner connection and power supply.**
- **Insufficient memory.**  
→ Close unused applications, etc. to free sufficient memory for the scanner, and retry.
- **Film feed error.**  
**Please remove the carrier and remove the film.**
- **Film feed error.**  
**Please remove the carrier and remove the cartridge.**
- **Film feed error.**  
**Please remove the carrier and remove the slide.**
- **Carrier cover or lamp cover is open.**  
**Please close the cover.**
- **Auto focus error**  
**Please reload the film.**  
**Change the “Focus” mode, if necessary.**  
→ For changing the “Focus” mode, see Focus on Film Window.
- **Auto focus error.**  
**Please reload the cartridge.**  
**Change the “Focus” mode, if necessary.**  
→ For changing the “Focus” mode, see Focus on Film Window.



- 
- **Auto focus error.**  
**Please reload the slide.**  
**Change the “Focus” mode, if necessary.**  
→ For changing the “Focus” mode, see Focus on Film Window.
  - **Halogen lamp is burned out.**  
**Please replace the lamp with a new one.**  
→ For the lamp replacement, refer to the Operating Instructions of the scanner.
  - **Scanner error.**  
**Please check your unit and reset the scanner.**  
→ To reset the scanner, turn it off and on.
  - **Not processed film is in this cartridge.**  
**Please remove the cartridge.**
  - **DX code is not found.**  
**Check film direction and reload the film when necessary.**  
→ If your film is an old type which does not have the DX code, you may continue the task.
  - **Inside the scanner is overheated.**  
**Turn off the power of the scanner.**  
→ Turn off the scanner and wait until it is well cooled down.  
If the scanner is subjected to direct sunlight or near a heater, move it away.
  - **Please remove slide and reset holder.**  
→ Remove the slide and push in the holder on the slide carrier.
  - **Please close the cartridge cover.**  
→ Close the lid of the cartridge compartment on the IX240 carrier.
  - **Slide quantity was different from the preview quantity.**  
→ The number of the scanned slides is different from the number of the preview images. Check the slides.
  - **JPEG format is not available for saving preview images. Do you wish to save only the scanned images?**  
→ Click OK to continue scanning.  
→ Click Cancel to change the saving file type or the file transfer mode.
  - **Scanner mechanical error Error Code: Ex (x: 0 to F)**  
→ Consult your authorized Sony dealer.

